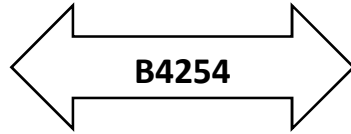


SHOW LAYOUT – NOT TO SCALE.

NELSON



GELLIGAER

PUBLIC ENTRANCE

ENTRANCE



HORSE TRANSPORT  
PARKING



LIVESTOCK

HORSE  
RINGS

LIVESTOCK  
TRANSPORT



PUBLIC  
PARKING

BEDWELTY AGRICULTURAL SOCIETY



ANNUAL SHOW 17<sup>TH</sup> AUGUST 2019

LLANCAIACH FAWR MANOR,  
NELSON, CF46 6ER

SCHEDULE OF LIVESTOCK & CROP  
HUSBANDRY CLASSES

ENTRIES CLOSE 10<sup>TH</sup> AUGUST.

LIVESTOCK SECRETARY

GLYN DAVIES TEL: 01443-839234

07974-813394

E. MAIL: [jglyns@gmail.com](mailto:jglyns@gmail.com)

[www.bedwelltyshow.co.uk](http://www.bedwelltyshow.co.uk)

### **CATTLE CLASSES:**

**Entry Fee £4.00. Prize Money. 1<sup>st</sup> £20.00, 2<sup>nd</sup> £14.00, 3<sup>rd</sup> £8.00.**

#### **SPECIAL REGULATIONS APPLYING TO CATTLE CLASSES.**

Cows or Heifers calving at the show or which have any sign of abnormal discharge will be placed in isolation and returned to the herd of origin as soon as practicable.

If Calving takes place or an abnormal discharge occurs before the time of judging such animals will not be allowed to compete.

**NO STRAW WILL BE SUPPLIED.**

### **NATIVE BEEF BREEDS.**

**Judge: Mr Russell Howells, Gower.**

CLASS 83 – Native Breed Bull. Over 24 months on 1<sup>st</sup> August in current year.

CLASS 84 – Native Breed Bull. Under 24 months on 1<sup>st</sup> August in current year.

CLASS 85 – Native Breed cow in milk or in calf.

CLASS 86 – Native Breed Heifer over 12 months on 1<sup>st</sup> August in current year.

CLASS 87 – Native Breed Heifer under 12 months on 1<sup>st</sup> August in current year.

CLASS 88 – Best Pair. Property of same owner & showed in above classes.

**1<sup>st</sup> & 2<sup>nd</sup> in each class go forward for Champion & Reserve of Section.**

**SPECIAL AWARD: The Gwynn's Garage Perpetual Challenge Cup for Champion Native Breed Exhibit.**

### **CONTINENTAL BEEF BREEDS.**

**Judge: TBC**

CLASS 89 – Beef Breed Bull.

CLASS 90 – Beef Breed Cow in milk or calf.

CLASS 91 – Beef Breed Heifer over 12 months on 1<sup>st</sup> August in current year.

CLASS 92 – Beef Breed Heifer under 12 months on 1<sup>st</sup> August in current year.

CLASS 93 Best Pair (1 female & 1 Bull) Property of same owner & showed in above classes.

**1<sup>st</sup> & 2<sup>nd</sup> in each class go forward for Champion & Reserve of Section.**

**SPECIAL AWARD: Halomark challenge cup for Continental Beef Breed Champion.**

### **PIG CLASSES:**

**Entry Fee £4.00**

**Prize Money: 1<sup>st</sup> £12, 2<sup>nd</sup> £10, 3<sup>rd</sup> £6.**

**Judge: Sharron Nicholas, Narbeth.**

**A movement and Sale of Pigs Schedule 4 License issued by appropriate Local Authority must accompany all pigs entered.**

**If insufficient entries, we reserve the right to amalgamate entries.**

### **ANY WHITE BREED**

CLASS 146 - Best Breeding Sow any breed or cross.

CLASS 147 - Best Breeding Gilt any breed or cross. Born before 1<sup>st</sup> January 2019.

CLASS 148 – Best Breeding Gilt any breed or cross. Born after 1<sup>st</sup> January 2019

### **COLOURED BREEDS:**

CLASS 149 - Best Breeding Sow any breed or cross.

CLASS 150 - Best Breeding Gilt any breed or cross. Born before 1<sup>st</sup> January 2019

CLASS 151 – Best Breeding Gilt any breed or Cross. Born after 1<sup>st</sup> January 2019.

### **OPEN CLASSES:**

CLASS 152 – Best Sow and Litter, any breed or cross. Litter not to be more than 8 weeks old.

CLASS 153 - Best breeding boar, any breed or Cross.

CLASS 154 - Best Pair, 1 Male, 1 Female.

**SPECIAL PRIZE: Pengam Horse Show Perpetual Cup for the best Sow and Litter.**

**SPECIAL PRIZE: Pitchford Perpetual Cup for the Best Pig in Show.**

**CHAMPION PIG – All 1<sup>st</sup> prize winners to compete.**

**Champion £50. Reserve Champion £25.**

### **WALES & BORDERS PIG BREEDERS ASSOCIATION YOUNG HANDLERS CLASSES.**

**Winners to compete at the Championship at the Winter Fair.**

**Exhibitors must be members or part of a family membership of the Wales and Border Counties Pig Breeders' Association to enter these classes. There will be provision to join the Association on the day of the show.**

***Points awarded 1<sup>st</sup> – 15pts, 2<sup>nd</sup> - 10pts, 3<sup>rd</sup> - 5 pts. Plus 5 points to every entry.***

CLASS 155 – Handlers aged between 5 and 8 years of age.

CLASS 156 – Handlers aged between 9 and 12 years of age.

## **SHEEP CLASSES:**

**ALL CLASSES Entry Fee. £2.00. Prize Money: 1<sup>st</sup> £12.00, 2<sup>nd</sup> £10.00, 3<sup>rd</sup> £6.00**

All Sheep must have been properly shorn. Facilities available for MV Accredited Flocks.

### **CHAMPION & RESERVE ROSSETTES AWARDED IN EACH BREED SECTION**

#### **SOUTH WALES MOUNTAIN.**

**Judge: Mr Gareth Miles, Gelligaer.**

CLASS 100 – Ram 2-Year-old & Over.

CLASS 101- Yearling Ram.

CLASS 102 - Ram Lamb.

CLASS 103 – Ewe Lamb.

CLASS 104 - Yearling Ewe.

CLASS 105 – Ewe 2-Year-Old & Over (must have reared a lamb in 2018.)

CLASS 106 – Best Group of 3, (1 Ram/Ram Lamb, 1 Ewe, 1 Ewe Lamb)

#### **SPECIAL AWARDS:**

**L & L Bowen Perpetual Challenge Cup to Champion South Wales Mountain.**

**Ty- Oakley Perpetual Challenge Cup to Best Group of 3.**

#### **BLACK WELSH MOUNTAIN.**

**Judge: Mr Ewan Hendrie, Talgarth.**

CLASS 107 - Ram Any Age.

CLASS 108 - Ram Lamb.

CLASS 109 – Ewe Lamb.

CLASS 110 - Yearling Ewe.

CLASS 111 – Ewe 2-Year-old & Over (must have reared a lamb in 2018)

CLASS 112 – Best Group of 3 (1 Ram/Ram Lamb, 1 Ewe. 1 Ewe Lamb)

**SPECIAL AWARD: Perpetual Challenge Trophy to Champion Black Welsh Mountain)**

#### **BADGER FACED – TORDDU WELSH MOUNTAIN.**

**Judge: Mr B, Eagles, Carmarthen**

CLASS 113- Ram Any Age.

CLASS 114 – Ram Lamb.

CLASS 115 – Ewe Lamb,

CLASS 116 – Ewe Any Age.

CLASS 117 – Best Group of 3(1 Ram/Ram Lamb, 1 Ewe. 1 Ewe Lamb)

#### **BADGER FACED – TORWEN WELSH MOUNTAIN**

**Judge: Mr B. Eagles, Carmarthen**

CLASS 118- Ram Any Age.

CLASS 119 – Ram Lamb.

CLASS 120 – Ewe Lamb,

CLASS 121 – Ewe Any Age.

CLASS 122 – Best Group of 3(1 Ram/Ram Lamb, 1 Ewe. 1 Ewe Lamb)

#### **BALWEN SHEEP.**

**Judge: Mrs E Eagles, Carmarthen**

CLASS 123- Ram Any Age.

CLASS 124 – Ram Lamb.

CLASS 125 – Ewe Lamb,

CLASS 126 – Ewe Any Age.

CLASS 127 – Best Group of 3(1 Ram/Ram Lamb, 1 Ewe. 1 Ewe Lamb)

#### **ANY OTHER LOWLAND BREED.**

**Judge: TBC.**

CLASS 128- Ram Any Age.

CLASS 129 – Ram Lamb.

CLASS 130 – Ewe Lamb,

CLASS 131 – Ewe Any Age.

CLASS 132 – Best Group of 3(1 Ram/Ram Lamb, 1 Ewe. 1 Ewe Lamb)

**SPECIAL AWARD: Perpetual trophy to best Texel exhibit**

#### **KERRY HILL.**

**Judge: Mr N. Radnor, Shropshire**

CLASS 133- Ram Any Age.

CLASS 134 – Ram Lamb.

CLASS 135 – Ewe Lamb,

CLASS 136 – Ewe Any Age.

CLASS 137 – Best Group of 3(1 Ram/Ram Lamb, 1 Ewe. 1 Ewe Lamb)

**SPECIAL AWARD: Trecelynen Trophy for Breed Champion.**

**ANY OTHER HILL BREED.**

**Judge: Mr N. Radnor, Shropshire.**

CLASS 138- Ram Any Age.

CLASS 139 – Ram Lamb.

CLASS 140 – Ewe Lamb,

CLASS 141 – Ewe Any Age.

CLASS 142 – Best Group of 3(1 Ram/Ram Lamb, 1 Ewe. 1 Ewe Lamb)

**FAT LAMBS.**

**Judge: TBC**

CLASS 143 - Best Pair of Fat Lambs over 32 Kilos Liveweight.

CLASS 144 – Best Pair of Fat Lambs under 32 Kilos Liveweight.

**YOUNG HANDLERS CLASS;** Judged on Handlers Ability.

Class 145 – Pet lamb Born in 2018. Handler to be Under12 years of age on day of show.

**INTERBREED GROUP CHAMPION. Judge: TBC**

Champion group from each section to compete.

**CHAMPION :£50.00, RESERVE: £25.00.**

**INTERBREED SUPREME CHAMPION. Judge. TBC**

Champion from each section to compete.

**CHAMPION: £50.00, RESERVE: £25.00**

**CROP HUSBANDRY: No Entry Fee, Entries Close Show Day 17<sup>th</sup> August**

**Prizes 1<sup>st</sup> £6.00, 2<sup>nd</sup> £4.00, 3<sup>rd</sup> £2.00.**

**Entries to Mr Baden Morgan. 07970-119624**

**ENTRIES RESTRICTED TO 12 Miles Radius of Showground**

CLASS 157 – Best Ley not less than 2 acres any age.

CLASS 158 – Best LEY Sown in 2018 not less than 2 acres.

CLASS 159 – Best General Green Crop or Kale of at least 2 acres. Not Grown for human consumption.

CLASS 160 – Open Class Best bale of hay made in 2018.

CLASS 161 – Best Clamp Silage.

CLASS 162- Best Big Bale Silage.

**SPECIAL PRIZE: THE RON THOMAS MEMORIAL TROPHY for most points gained in the Crop Husbandry section. 1<sup>st</sup>- 3 pts, 2<sup>nd</sup> – 2 pts 3<sup>rd</sup> – 1 pt.**

**YOUNG HANDLERS:**

**Prize Money: 1<sup>st</sup> £10.00, 2<sup>nd</sup> £6.00, 3<sup>rd</sup> £4.00.**

**Judge TBC.**

CLASS 94 –

Section (A) Handler under 16 years of age on day of show.

Section(B) Handler over 16 and under 21 years of age on day of show.

**SPECIAL AWARD: The E.P Davies – Perpetual Trophy for best young handler.**

**BUTCHERS CATTLE:**

**Prize Money: 1<sup>st</sup> £20.00, 2<sup>nd</sup> £14.00, 3<sup>rd</sup> £8.00.**

**Judge TBC.**

CLASS 95 – Best Steer, any breed or cross, judged the most suitable for the Butcher.

CLASS 96 – Best Heifer, any breed or cross, judged the most suitable for the Butcher.

CLASS 97 - Best Pair, any breed or cross, judged the most suitable for the Butcher.

**SPECIAL AWARD: E Nicholas Memorial Perpetual trophy for Champion butcher's animal.**

**SUCKLER HERD CLASSES –**

**Entries Close Show Day 17th August.**

**No Entry Fee**

**Prize Money: 1<sup>st</sup> £6.00, 2<sup>nd</sup> £4.00 3<sup>rd</sup> £2.00.**

CLASS 98- Local Suckler Herd of Under 30.

CLASS 99 – Local Suckler Herd of over 30.

Local is Defined as within 12 miles radius of the Showground.

**SUPREME CHAMPION IN CATTLE CLASSES.**

**SUPREME CHAMPION £50.00 RESERVE £25.00.**

**SPECIAL AWARD: Pinkstone perpetual challenge cup to Best female in the cattle classes.**

**SPECIAL AWARD: Argus perpetual Challenge Cup to BEST ANIMAL IN THE CATTLE Classes**